



13 Monkey Island Lane, Bray, Maidenhead, SL6 2LL
£260,000

13 Monkey Island Lane, Bray, Maidenhead, SL6 2LL

This exceptional two-bedroom residence seamlessly combines contemporary comfort with a picturesque setting and outstanding convenience. Beautifully presented throughout, the property has been thoughtfully designed to balance style and practicality, offering bright, spacious interiors that create a warm and welcoming atmosphere.

The well-appointed accommodation provides comfortable and versatile living spaces, perfectly suited to modern lifestyles. Enjoying a peaceful setting while remaining within easy reach of excellent local amenities, transport links and nearby attractions, this superb home offers the perfect blend of tranquillity, convenience and contemporary living.



From the moment you step inside, the welcoming foyer draws you into the heart of the home. The open-plan living area is filled with natural light, enhanced by elegant hardwood floors and refined finishes. Expansive windows frame views of the surrounding greenery, creating a calm and inviting atmosphere. The contemporary kitchen is both stylish and functional, featuring premium stainless-steel appliances, sleek granite countertops, and generous storage space.

The property comprises two well-appointed bedrooms. The principal suite provides a peaceful retreat, complete with a built-in wardrobe and a modern en-suite bathroom, while the second bedroom is equally spacious and versatile, with ample storage.

Externally, residents benefit from beautifully landscaped communal gardens, perfect for relaxing outdoors. Ideally located, the property is within easy reach of local shops, restaurants, green spaces, and highly regarded schools, ensuring both convenience and quality of lifestyle.

General Information:

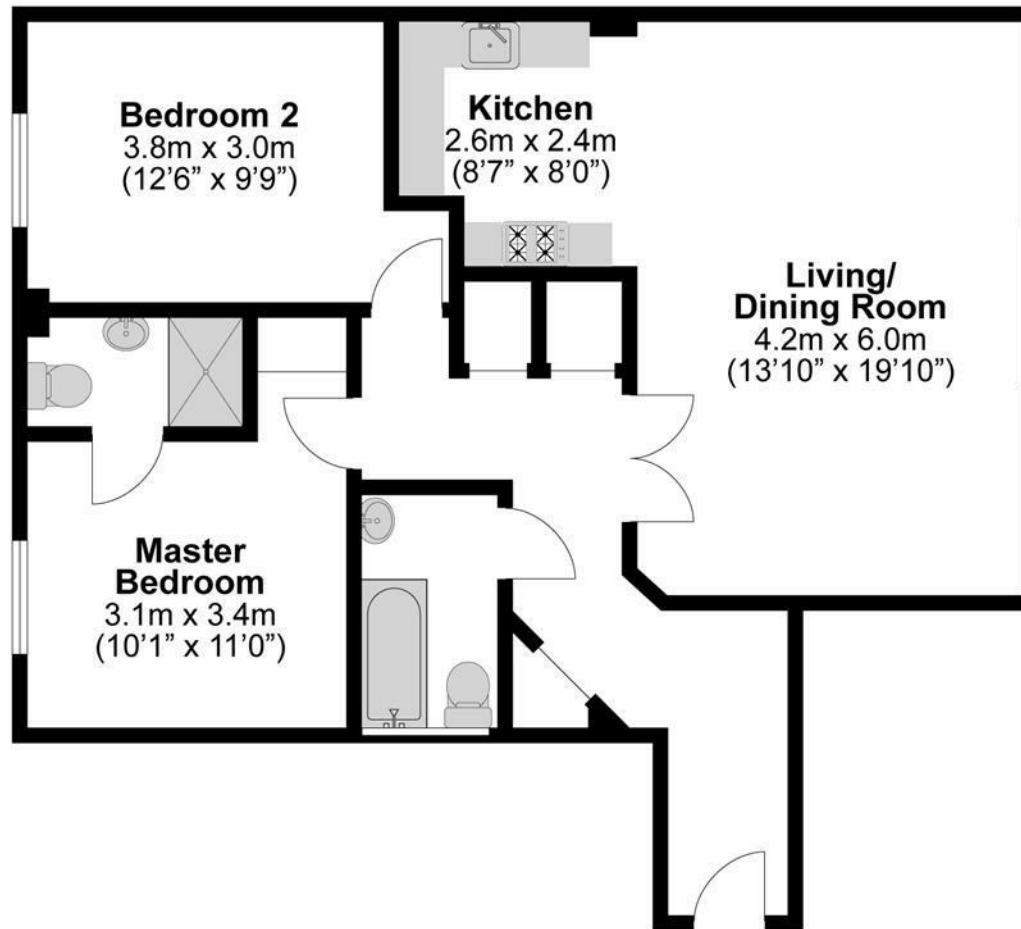
Service Charge: Approx. £1520 per year
Lease remaining: Approx. 101 years left
Ground Rent: Approx. £100 per year
Council Tax Band 'D'

Legal Note:

Although these particulars are thought to be materially correct, their accuracy cannot be guaranteed and they do not form part of any contract.







**Illustrations are for identification purposes only,
measurements are approximate, not to scale.**